

Journal Jack

Model number

JJ

25

13

Journal jack

Capacity (ton)

Stroke (cm)

Journal Jacks are available as screw jacks having outstanding feature of overall stability and durability.



High lift

Low lift

Medium lift

Features

- Journal jacks with forging gear apply a great forces and good engagement.
- Ratchet handle is designed for engagement both wheel and plunger, which are called "Wedge principle". Journal Jacks have also Good durability & stability.

Application

- For jack-up, jack-down (lifting up and down for heavy load)
- For positioning adjusting and support heavy load, and structures
- For bridge works • For shipbuilding works or repair
- For construction or building works • For support of heavy load

Journal Jack with traversing bed

All kinds of Journal Jacks except for JJ-100 ton are designed for inserting for traversing bed . That means Journal Jacks can use together with traversing bed. Length of traverse is available for 300mm & 450mm. Usable traversing bed (option) in each model are as below spec list. When placing order, contact to us. See page 68 on use of traversing beds.

* Traversing bed is required when lateral travel of loaded jack is needed.

* Usable grease: Daphne Eponex Grease EP No.1 or equivalent

Journal Jack with traversing bed



1000kN Journal Jack

This jack is worm gear jack type.

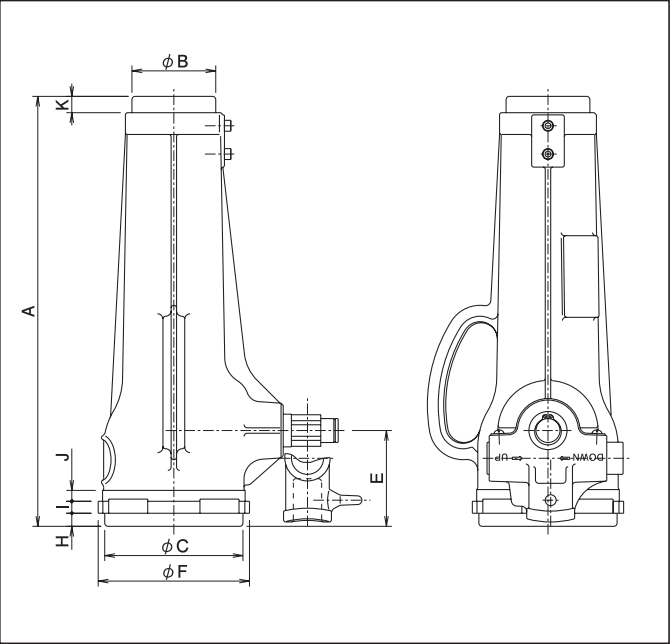


Specifications

Model		Low lift					Medium lift					High lift		
Items	Unit	JJ-1513	JJ-2513	JJ-3513	JJ-5013	JJ-10011	JJ-1015	JJ-2525	JJ-3020	JJ-3525	JJ-5025	JJ-2533	JJ-3535	JJ-5035
Capacity	kN(tf)	150(15)	250(25)	350(35)	500(50)	1000(100)	100(10)	250(25)	300(30)	350(35)	500(50)	250(25)	350(35)	500(50)
Stroke	mm	125	125	130	130	105	150	250	200	250	250	330	350	350
Closed height (A)	mm	255	255	280	290	310	280	395	350	410	445	485	535	555
Head diameter (φB)	mm	63	77	87	105	127	65	77	95	87	105	77	87	105
Basic diameter (φC)	mm	113	127	147	166	235	108	127	148	147	166	127	147	166
Weight approx.	kg	12	16	24	31	75	12	21	26	32	42	25	37	47
Operating torque	N·m	420	700	1000	1400	1000	250	700	850	1000	1400	700	1000	1400
Handle bar		φ25×600L	φ25×700L	φ32×700L	φ32×800L	φ32×1500L	φ25×600L	φ25×700L	φ25×700L	φ32×700L	φ32×800L	φ25×700L	φ32×700L	φ32×800L
Traversing bed (option)	Items	TB-1530	TB-2530 TB-2545	TB-3530 TB-3545	TB-5030 TB-5045	—	TB-1030	TB-2530 TB-2545	TB-3530 TB-3545	TB-3530 TB-3545	TB-5030 TB-5045	TB-2530 TB-2545	TB-3530 TB-3545	TB-5030 TB-5045
	Length of traverse	mm	300 450	300 450	300 450	—	300	300 450	300 450	300 450	300 450	300 450	300 450	300 450

Journal Jack

Dimensional drawing

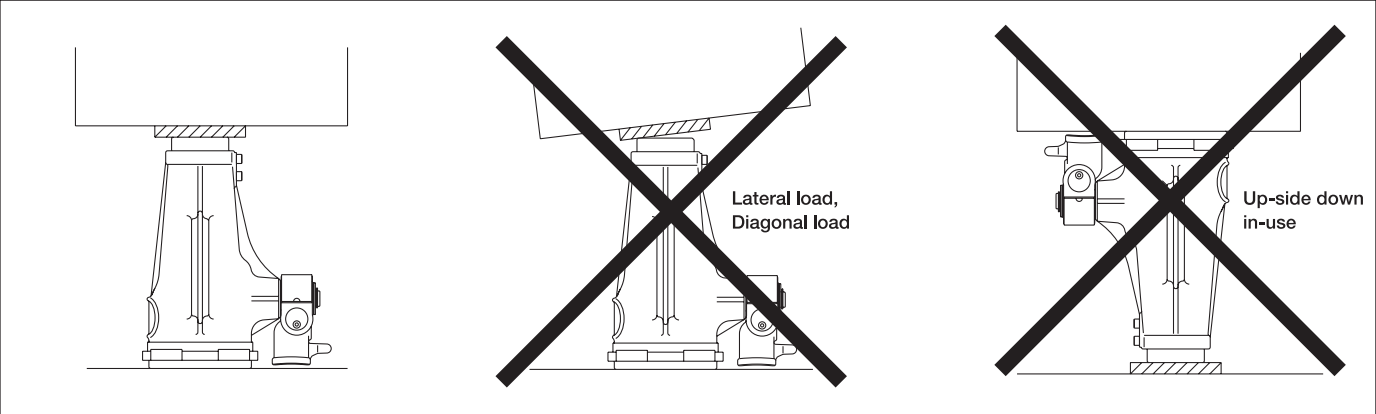


Dimension chart

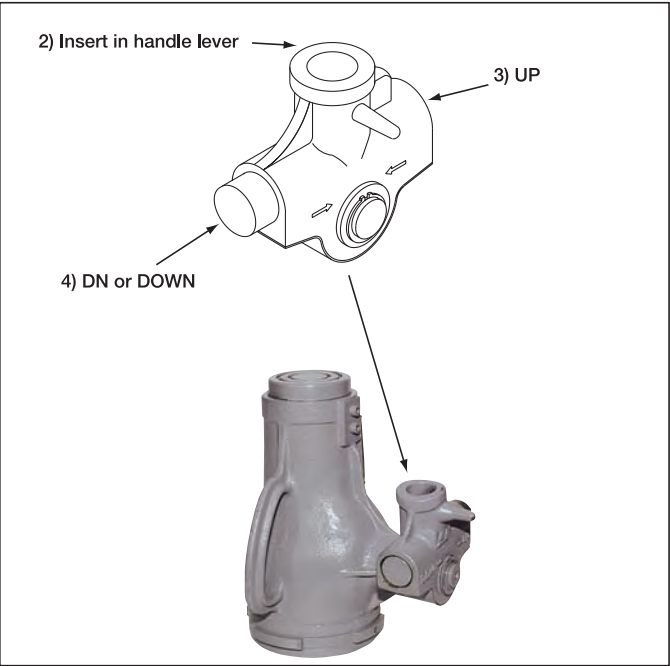
(Unit: mm)

	Model	E	F	H	I	J	K
Low lift	JJ-1513	77	127	9	10	10	15
	JJ-2513	88	139	12	11	10	15
	JJ-3513	103	161	12	12	15	18
	JJ-5013	106.5	183	14	15	16	18
Medium lift	JJ-1015	75.7	120	8	11	10	15
	JJ-2525	88	139	12	11	10	15
	JJ-3020	99	161	12	12	10	15
	JJ-3525	103	161	12	12	15	18
	JJ-5025	106.5	183	14	15	16	18
High lift	JJ-2533	88	139	12	11	10	15
	JJ-3535	103	161	12	12	15	18
	JJ-5035	106.5	183	14	15	16	18

How to use



* Do not use in up-side down or pulling force.



How to operate

- 1) Apply loads vertically and overall in the center of gravity of load.
- 2) Make sure to insert the handle lever into the bottom of ratchet handle. Incomplete insertion of handle lever leads to slipping off during operation.
- 3) Before using the jack for lifting, push the liner of the ratchet handle to "UP" position and operate the handle lever up and down.
- 4) Before using the jack for lowering, push the liner of the ratchet handle to "DOWN" or "DN" position and operate (carefully) the handle lever up and down.
- 5) Take care always to stabilize load when jacking up and down.

Journal Jack

Traversing bed

Model number

TB 25 30

Traversing bed

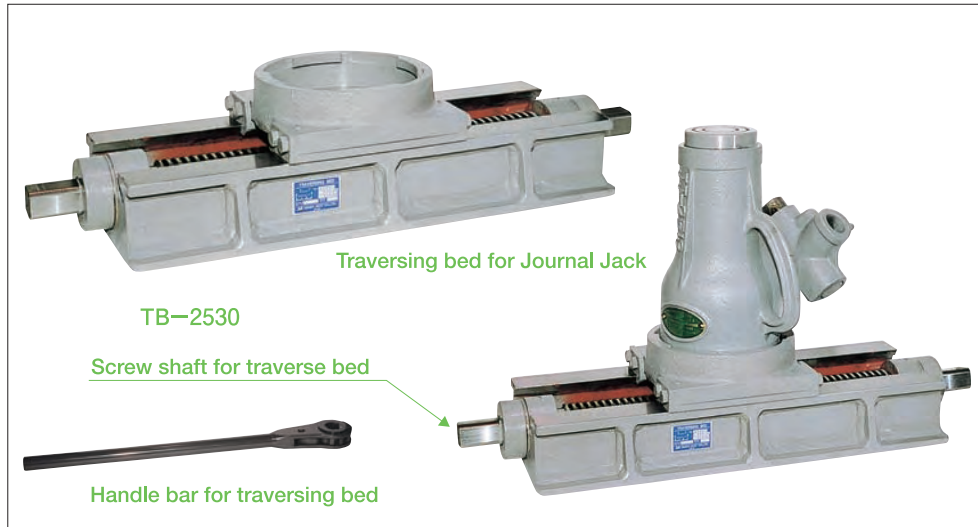
Capacity (ton)

Length of traverse (cm)

Features

Traversing bed is used when jack travel laterally. Without applying load directly, journal jack is constructed to set on traversing bed. Be sure to take care to operate falling of load during travelling.

However, Journal Jack (JJ-10011), Aluminum Jack (AJ) and Journal Jack with toe (NJ) can not be used.



Specifications

Model		TB-1030	TB-1530	TB-2530	TB-2545	TB-3530	TB-3545	TB-5030	TB-5045
Items	Unit								
Capacity	kN(tf)	100(10)	150(15)	250(25)	250(25)	350(35)	350(35)	500(50)	500(50)
Height up to bottom surface of jack	mm	85	85	90	90	97	97	108	128
Length of traverse	mm	300	300	300	450	300	450	300	450
Weight approx.	kg	20	20	25	31	33	38	43	66
Handle bar		φ 24×535L	φ 24×535L	φ 30×600L	φ 30×600L	φ 30×600L	φ 30×600L	φ 30×600L	φ 30×600L

Safety base

Model number

SB 10

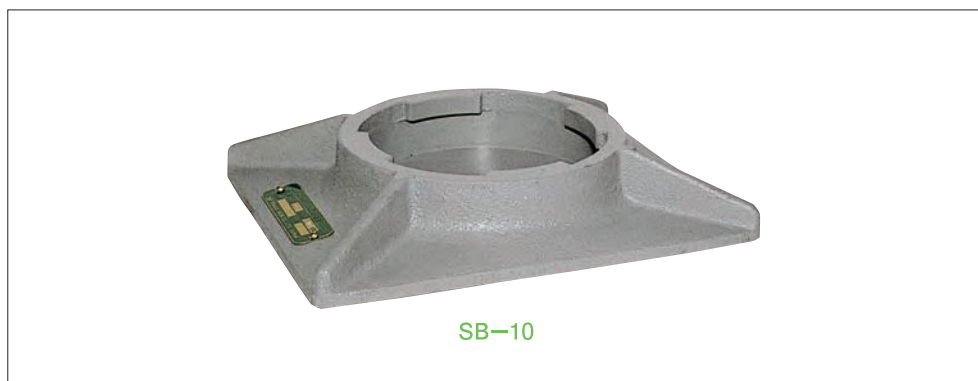
Safety base

Capacity (ton)

Features

In case of unstable area or weak setting base of jacks, safety base is used to stabilize jacks furthermore. Journal Jacks are made with a structure for setting to the safety base.

Be sure to use safety nut, when base area for jack is set in weak position. However, Journal Jack (JJ-10011), Aluminum Jack (AJ) and Journal Jack with toe (NJ) can not be used.



Specifications

Model		SB-10	SB-15	SB-25	SB-30	SB-35	SB-50
Items	Unit						
Capacity	kN(tf)	100(10)	150(15)	250(25)	300(30)	350(35)	500(50)
Base dia.	Length	mm	220	240	300	300	400
	Width	mm	180	190	200	220	300
	Thickness	mm	10	12	15	18	19
Weight approx.	kg	2.0	5.0	7.5	9.5	9.5	20.0

Aluminum Jack

Model number

AJ 10 08

Aluminum jack

Capacity (ton)

Stroke (cm)

Light weight Aluminum Jack due to aluminum body

When using Aluminum jacks, treat aluminum jacks with care and avoid rough handling.

Features

- Aluminum jacks enjoy pad bearings instead of normal bearings.
- Light weight, lower height
- Two handle bar can use as one handle bar.

Application

- Centering machinery works
- Movement for precision machinery
- Works for construction, higher place job.
- Minor movement for heavy machinery

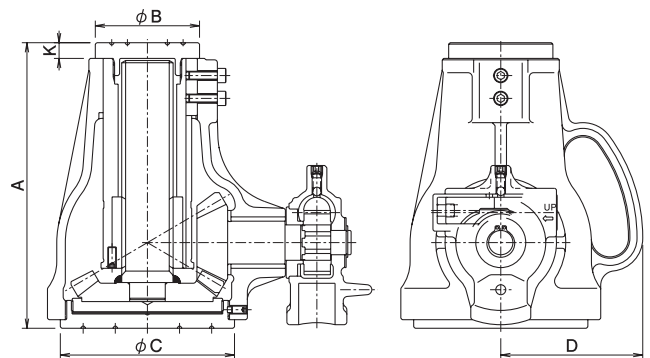


AJ-1008

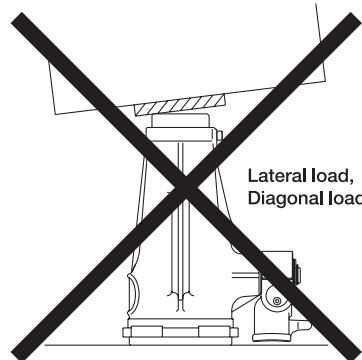
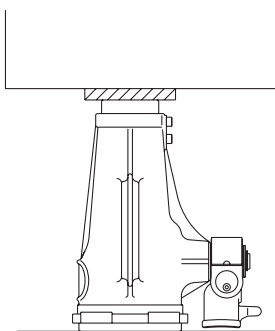


AJ-2510

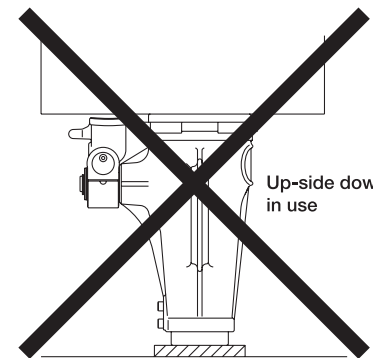
Dimensional drawing



How to use



Lateral load,
Diagonal load



Up-side down
in use

* Do not use in up-side down or pulling force.

Specifications

Items	Model	Unit	AJ-1008	AJ-1510	AJ-2510
Capacity	kN(tf)		100(10)	150(15)	250(25)
Stroke	mm		80	100	100
Operational torque	N·m		250	420	700
Closed height	mm		175	200	200
Head diameter (φB) (cap)	mm		58	58	73
Base diameter (φC)	mm		102	102	122
D	mm		88	89	100
K	mm		10	10	11
Weight approx.	kg		6.1	6.8	9.5
Attached handle bar			φ 27.2×575L	φ 27.2×575L	φ 30×675L

Note) • Usable grease: Daphne Eponex Grease EP No.1 or equivalent
• Jacks cannot attach to safety bed or traversing bed.