



FLH1 FLH2



Operation Manual

This operation manual explain the basic usage and handing of clamps.

Please do not fail to carefully read this instruction manual before use and never fail to follow each attention of usage for the proper handing of clamps.

SUPER TOOL CO., LTD.

Balance with hook for fork lift

FLH1

FLH2

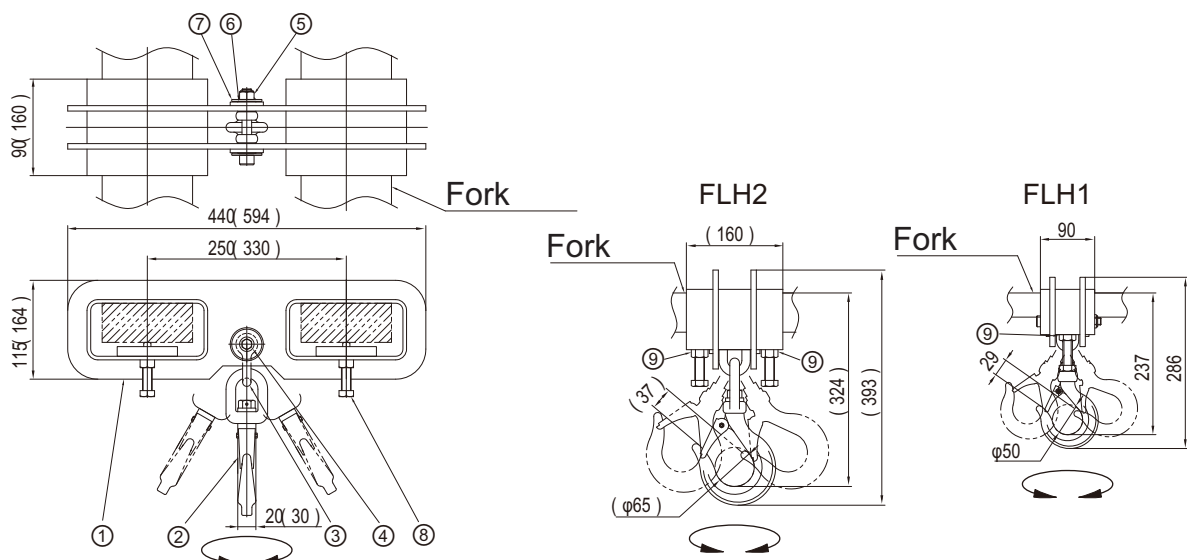
■ FEATURES

1. Attaching of the balance will change a fork lift to a mobile crane.
2. Only tighten the securing bolts to fix the balance.
3. The latch is attached to the swivel hook for omnidirectional operation and is vibration-proof.

■ SPECIFICATIONS

Model	Capacity (ton)	Applicable fork (mm)		Net Weight (kg)
		Width	Thickness	
FLH1	1	70~120	15~40	12
FLH2	2	120~150	38~65	24

■ MAJOR DIMENSIONS AND PARTS NAMES



No	Parts name	Q'ty
1	Body	1
2	Swivel hook	1
3	Shackle	1
4	Bolt for attaching a hook	1
5	Nut for attaching a hook	1

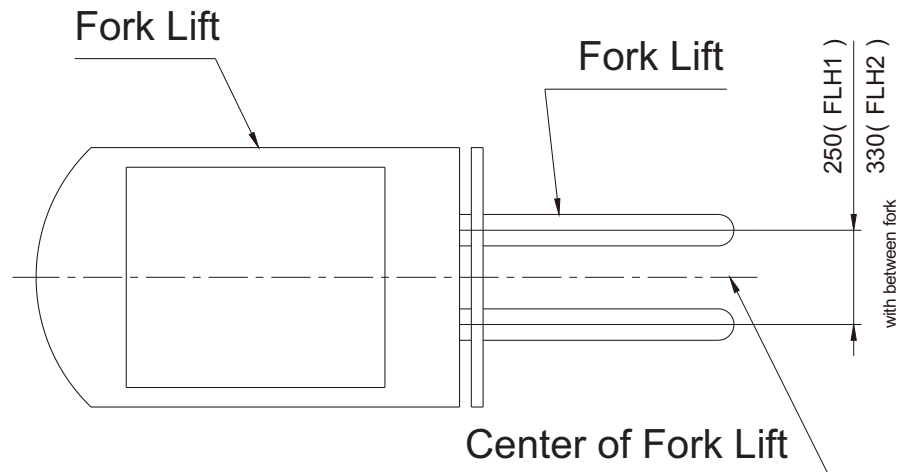
No	Parts name	Q'ty
6	Collar	2
7	Washer	2
8	Securing bolt	2(4)
9	Lock nut	2(4)

■ Operating Method

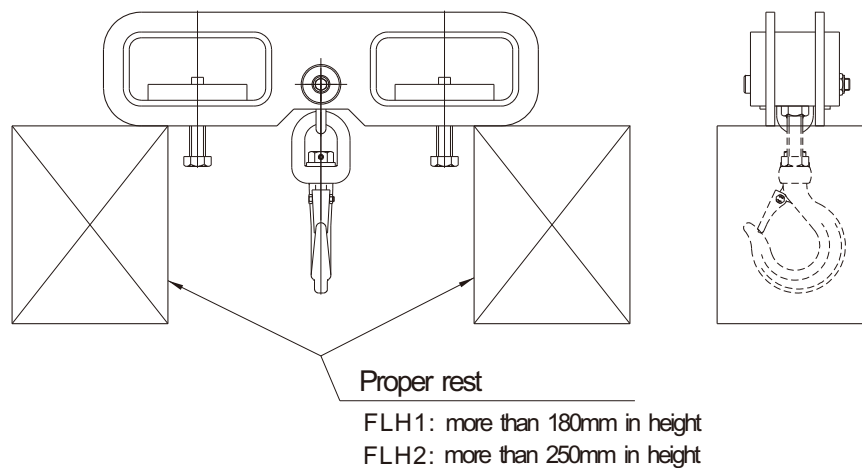
● Installation of lifting clamp

(1) Set the width at 250mm for FLH1, and 330 for FLH2

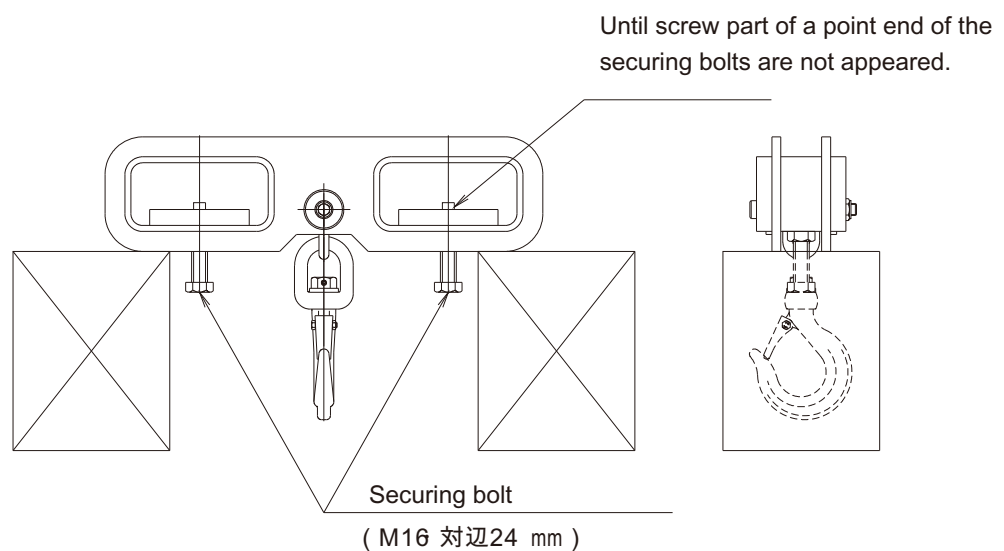
(Align the center of fork lift to the center of the space between the forks)



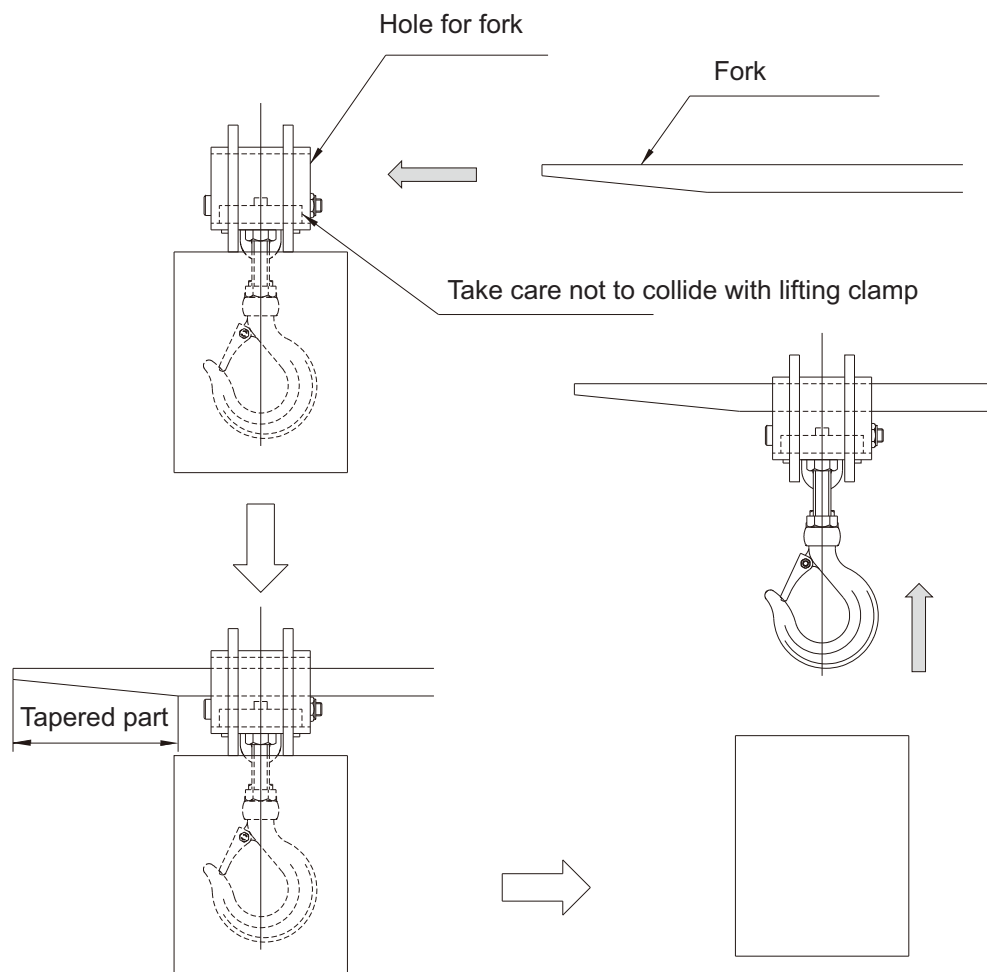
(2) Place the lifting clamp on the proper rest (sleeper etc)



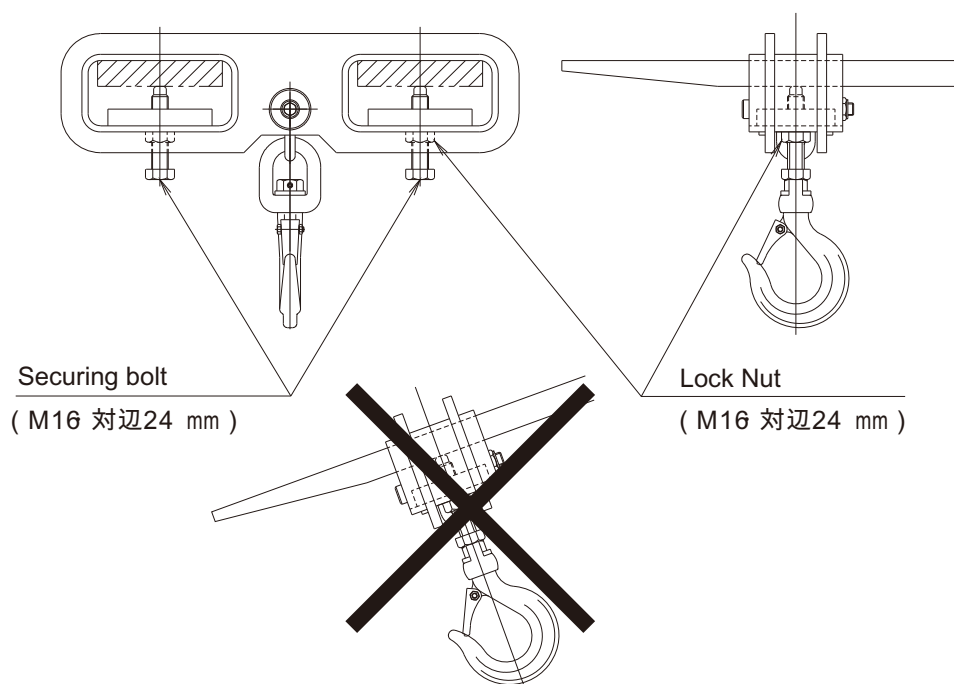
(3) Loosen securing bolt (two bolts)



- (4) Insert the forks into holes for the forks of the fork lift and position them to be fixed.
(When inserting the forks, take care not to collide with the lifting clamp)
Next, raise the forks up in order to easily tighten the securing bolts.



- (5) Tighten the lifting clamp and forks of the fork lift by securing bolts
(The angle of the forks of the fork lift must be horizontal at this time)
Never use when the fork of the fork lift is not horizontal.



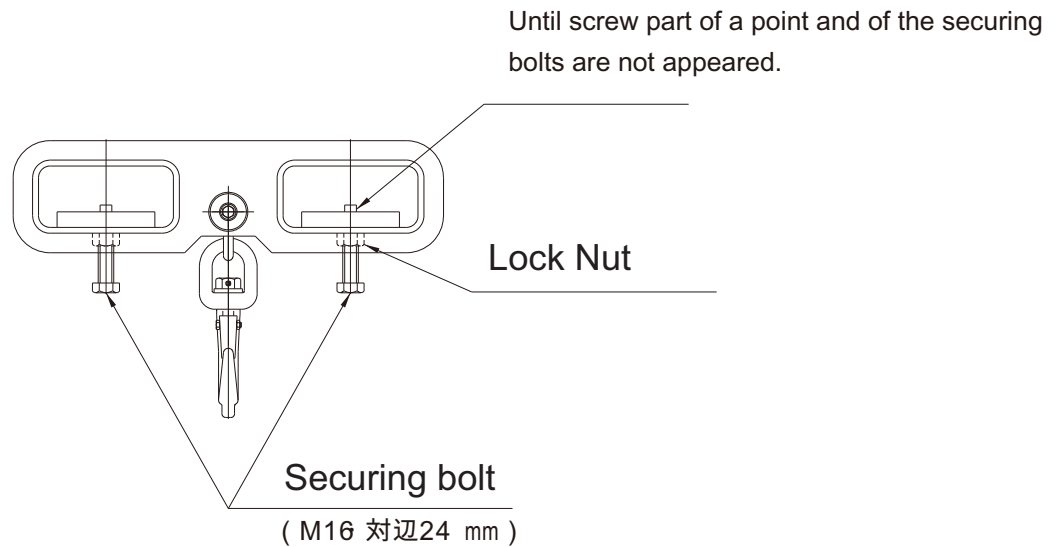
- Instruction of use

(1) Set the load (sling tool etc.) to the swivel hook of the lifting clamp.

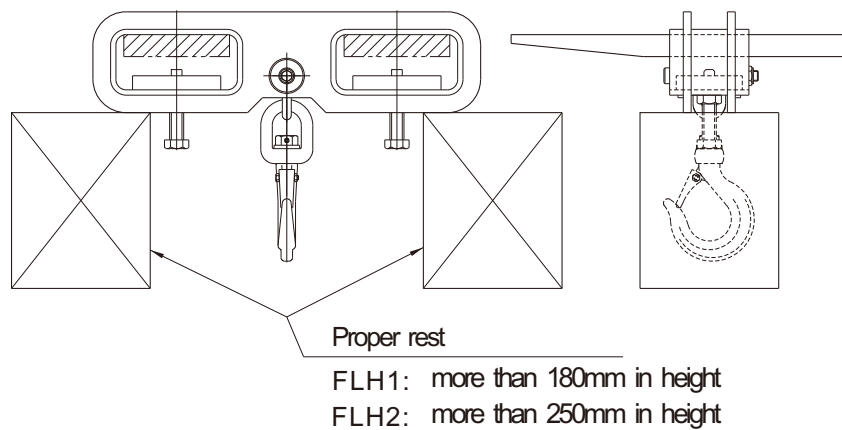
Lift the load and move it to the destination. Read <⚠ WARNINGS> carefully.

- Removal of lifting clamp

(1) Loosen the lock nut for stopper of loosening. Next, loosen the securing bolts.

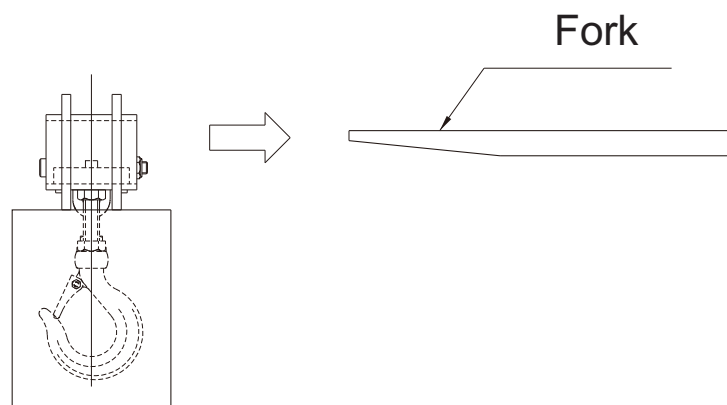


(2) Place the lifting clamp on the proper rest



(3) Pull out the forks.

(When pulling out the forks, make sure that the fork and the lifting clamps are not caught in)





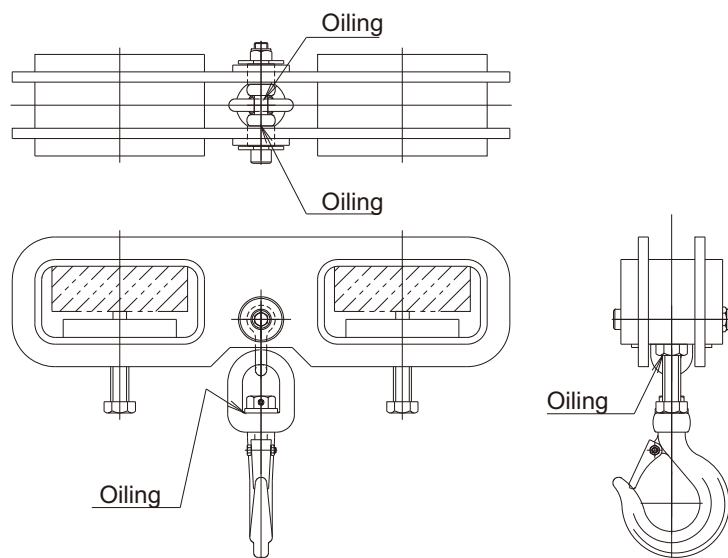
INSTRUCTION FOR USE

Keep these instructions within easy access of operators.

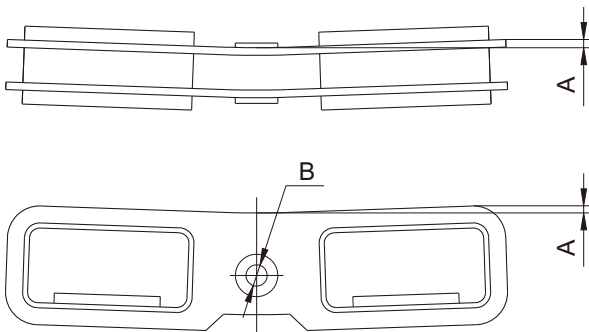
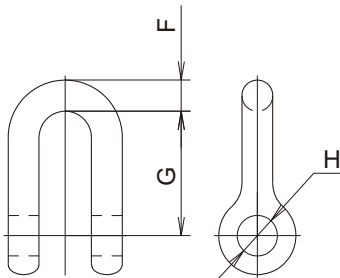
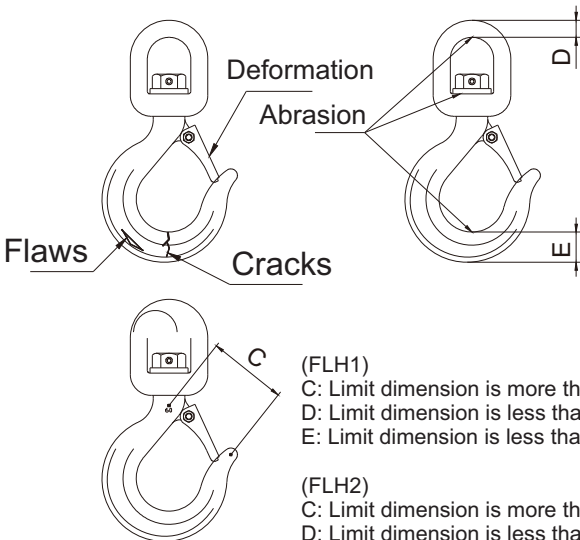
It is important that operators understand these warnings and instructions before using

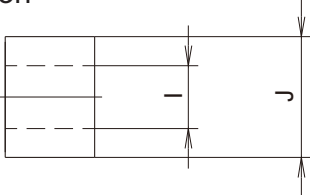
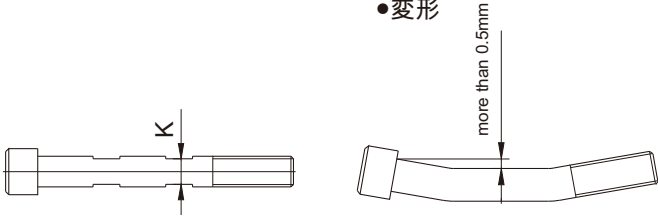
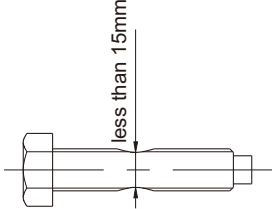
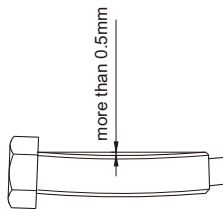
<WARNINGS>

1. The maximum rated capacity of this lifting clamp is 1 ton.
Never exceed the rated capacity of the lifting clamp.
Especially when lifting the load is caught in, the extra massive strength causes damage of the lifting clamp.
2. Never use the lifting clamp for lateral pulling or extracting.
This lifting clamp is used only for vertical lifting.
3. Never use the forks other than the specified specifications.
4. Never drop or apply a shock to the load.
5. Never hit the lifting clamp or the load with an obstacle during lifting and transporting.
6. All personnel must stand clear of the lifting clamp and the load (within the range of the load falling down).
7. Never make a sudden start or stop during lifting and transporting.
8. When inserting and pulling out the forks, operate slowly and take care not to hit the lifting clamp with the forks.
9. When installing the lifting clamp, set it to the center of fork lift.
10. Never modify lifting clamps.
11. Oil specified points as below sometimes.
12. Check the abnormality periodically according standards for checking.



■INSPECTION STANDARDS

Category	Inspecting Method	Limit of use	Counter-measures
Body	Check for deformation cracks and flaws (visual, measuring or color checking)	When confirmed by visual checking	Disposal
Bolts and Nuts	Check for abrasion or deformation on the bolt holes. (by measuring device)	 <p>(FLH1) A: Deformation of more than 3mm B: Limit diameter of Φ 26mm</p> <p>(FLH2) A: Deformation of more than 3mm B: Limit diameter of Φ 32mm</p>	
Shackle	<p>Check for cracks and flaws (Visual checking or color checking)</p> <p>Abrasion at the lifting part (by measuring device)</p> <p>Deformation of the hole (by measuring device)</p>	<p>When abrasion or</p>  <p>(FLH1) F: Less than 9mm G: More than 43.2mm H: More than Φ13.7mm</p> <p>(FLH2) F: Less than 12.6mm G: More than 60.5mm H: More than Φ18.9mm</p>	Replacement
Swivel Hook	<p>Check for flaws, crack, deformation, and abrasion (by visual checking, measuring device, or color checking)</p> <p>Visual checking and confirm if the latch is functioning correctly or not.</p>	 <p>(FLH1) C: Limit dimension is more than 63mm D: Limit dimension is less than 12.4mm E: Limit dimension is less than 21.9mm</p> <p>(FLH2) C: Limit dimension is more than 84mm D: Limit dimension is less than 15.2mm E: Limit dimension is less than 29.5mm</p> <p>Incorrect functioning and deformation of the latch</p>	Replacement

Category	Inspecting Method	Limit of use	Counter-measures
Collar	Check for abrasion or deformation. (by visual check and measuring device)	<p>Abrasion</p>  <p>(FLH1) I: More than $\Phi 13\text{mm}$ J: Less than $\Phi 23.5\text{mm}$</p> <p>(FLH2) I: More than $\Phi 18.5\text{mm}$ J: Less than $\Phi 29.5\text{mm}$</p>	Replacement
Bolt for attaching a hook	Check for abrasion or deformation. (by visual check and measuring device)	<p>●変形</p>  <p>(FLH1) K: Less than $\Phi 11.5\text{mm}$ (FLH2) K: Less than $\Phi 15.5\text{mm}$</p>	Replacement
Securing bolt	Check for abrasion or deformation. (by visual check and measuring device)	<p>●Abrasion</p>  <p>●Deformation</p> 	Replacement

株式
会社

スーパーツール

<https://www.supertool.co.jp/>



□ 本社・工場 〒599-8243	大阪府堺市中区見野山158番地	TEL.072-236-552 (代)	FAX.072-236-5785
□ 大阪支店 〒599-8243	大阪府堺市中区見野山158番地	TEL.072-236-552 (代)	FAX.072-236-3817
□ 東京支店 〒142-0041	東京都品川区戸越3丁目4-18 ゴールドステージビル4F	TEL.03-5750-234 (代)	FAX.03-5750-2347
□ 名古屋支店 〒460-0026	名古屋市中区伊勢山1丁目2-4	TEL.052-323-070 (代)	FAX.052-323-0720
□ 札幌 〒003-0029	札幌市白石区平和通3丁目北4-20	TEL.011-864-3581	FAX.011-864-3590
□ 仙台 〒984-0831	仙台市若林区沖野2丁目8-5	TEL.022-294-1922	FAX.022-285-1513
□ 北関東 〒337-0004	さいたま市見沼区卸町2丁目6-9	TEL.048-682-5000	FAX.048-682-5059
□ 広島 〒733-0012	広島市西区中広町2-14-27	TEL.082-293-5570	FAX.082-293-5531
□ 福岡 〒812-0016	福岡市博多区博多駅南3-10-23	TEL.092-431-1897	FAX.092-431-1909